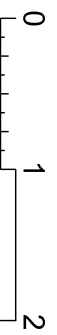
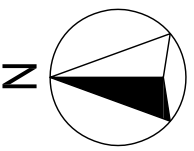


# LAGO DI COMO

## APPARTEMENT B23

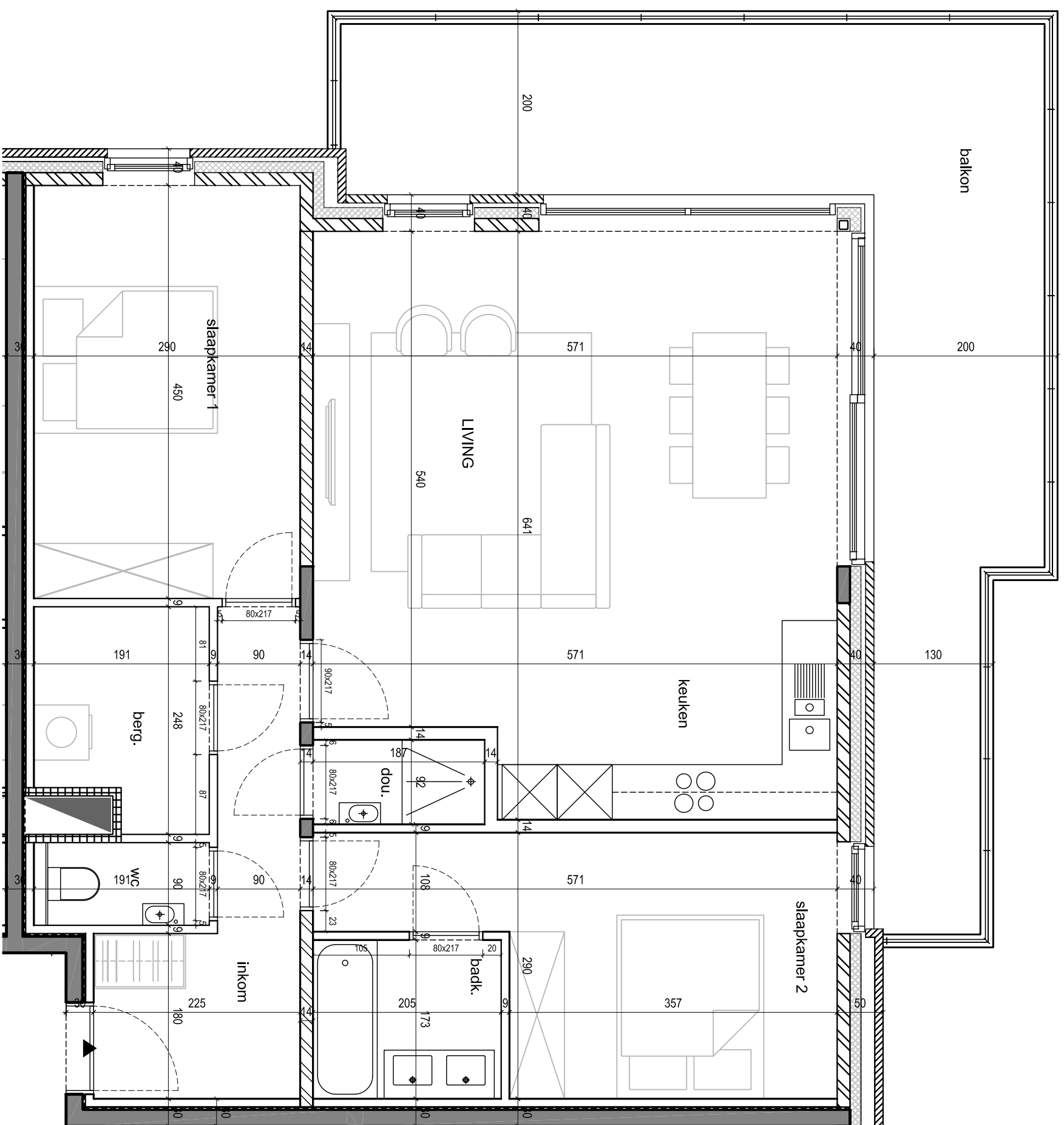
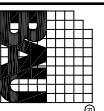
### Verdieping 2

Opp. appartement : 93.70 m<sup>2</sup>  
Opp. balkon : 29.40 m<sup>2</sup>  
Officiële nummering : 122B 0023



Alle afmetingen, toestellen en meubelen zijn illustratief.  
24 mei 2018

B.A.U. bvba ARCHITECTENBUREAU B.&C. COUSSEEE  
Handelsstraat 78 b1 - 8800 Roselare  
tél.: +32 51 26 11 70 - fax.: +32 51 26 11 71  
mail@BAUcousseee.be - www.BAUcousseee.be



B.A.U. bvba ARCHITECTENBUREAU B.&C. COUSSEEE  
Handelsstraat 78 b1 - 8800 Roselare  
tél.: +32 51 26 11 70 - fax.: +32 51 26 11 71  
mail@BAUcousseee.be - www.BAUcousseee.be